

Water depth and ecosystem attributes in Lake Okeechobee

KARL HAVENS

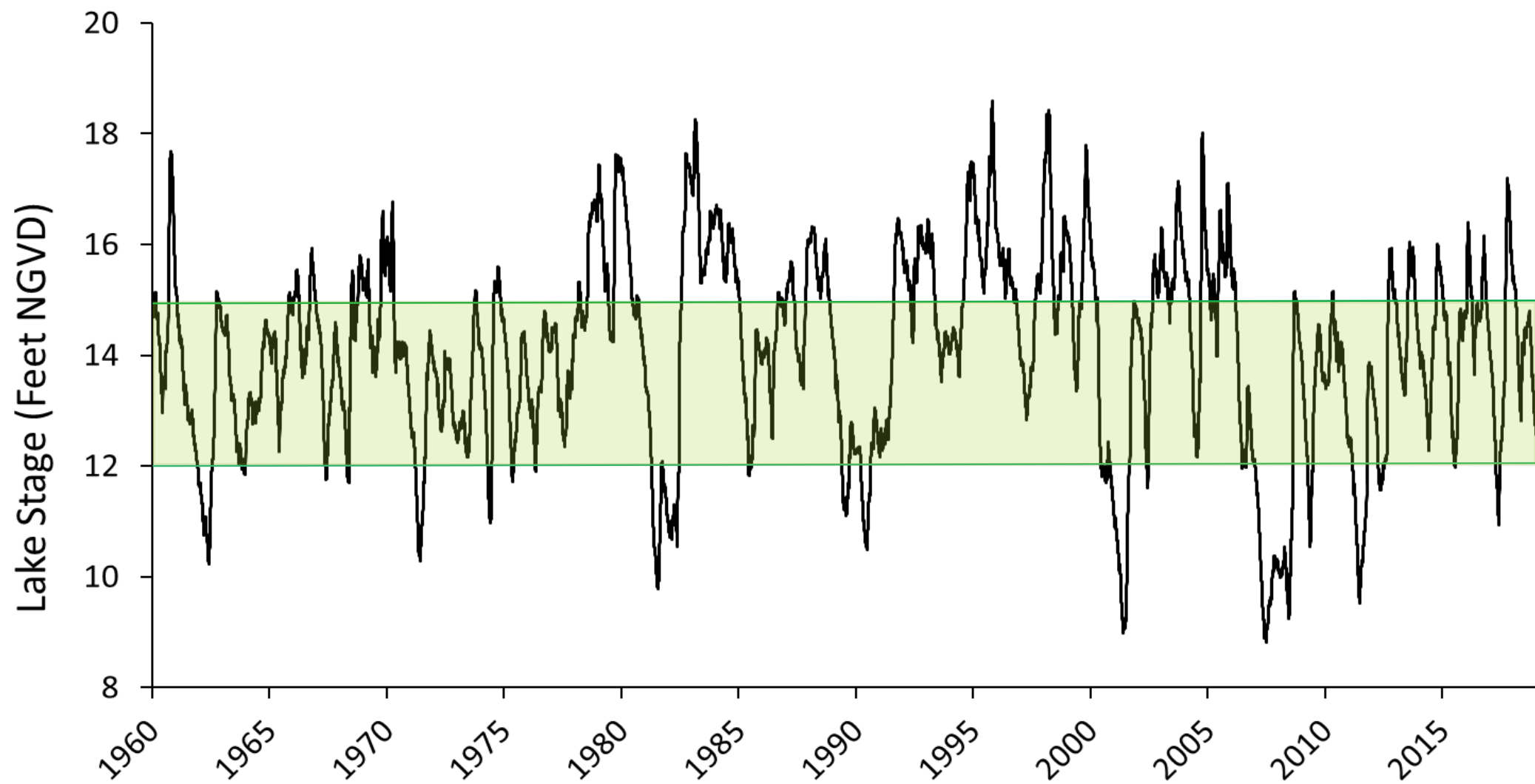
FLORIDA SEA GRANT, UNIVERSITY OF FLORIDA / IFAS

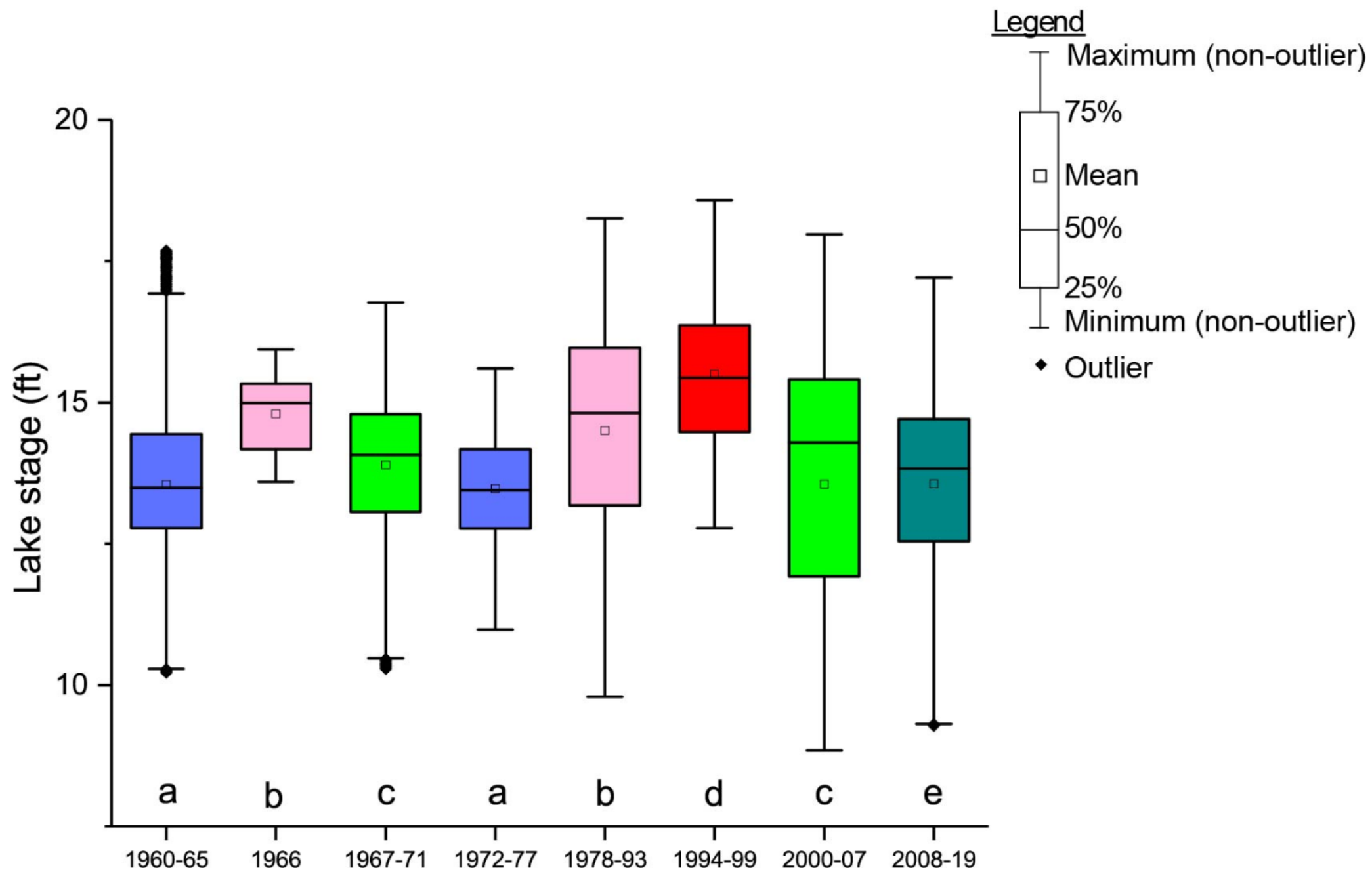


Outline

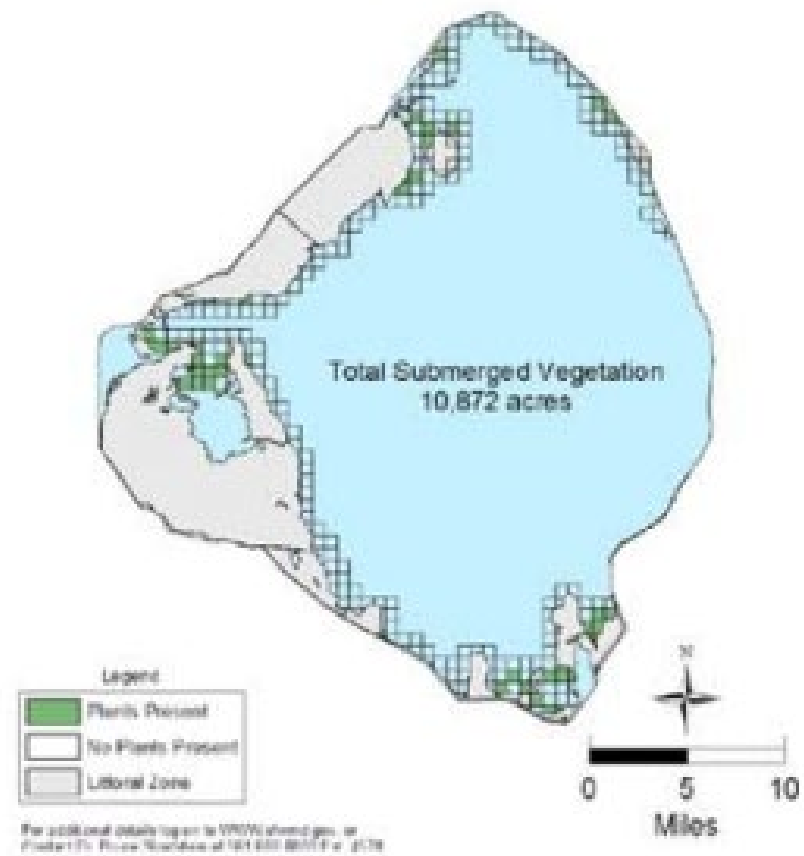
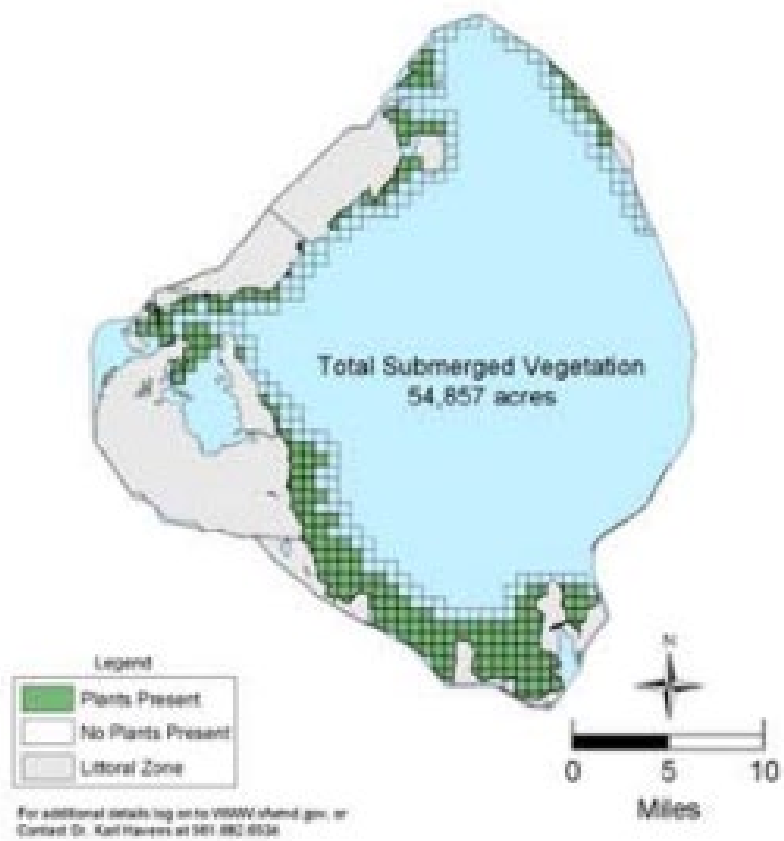
- Depth variation in Lake Okeechobee
- Submerged and emergent vegetation
- Wading birds and snail kites
- Resilience and antecedent conditions
- Modeling and monitoring

Depth Variation

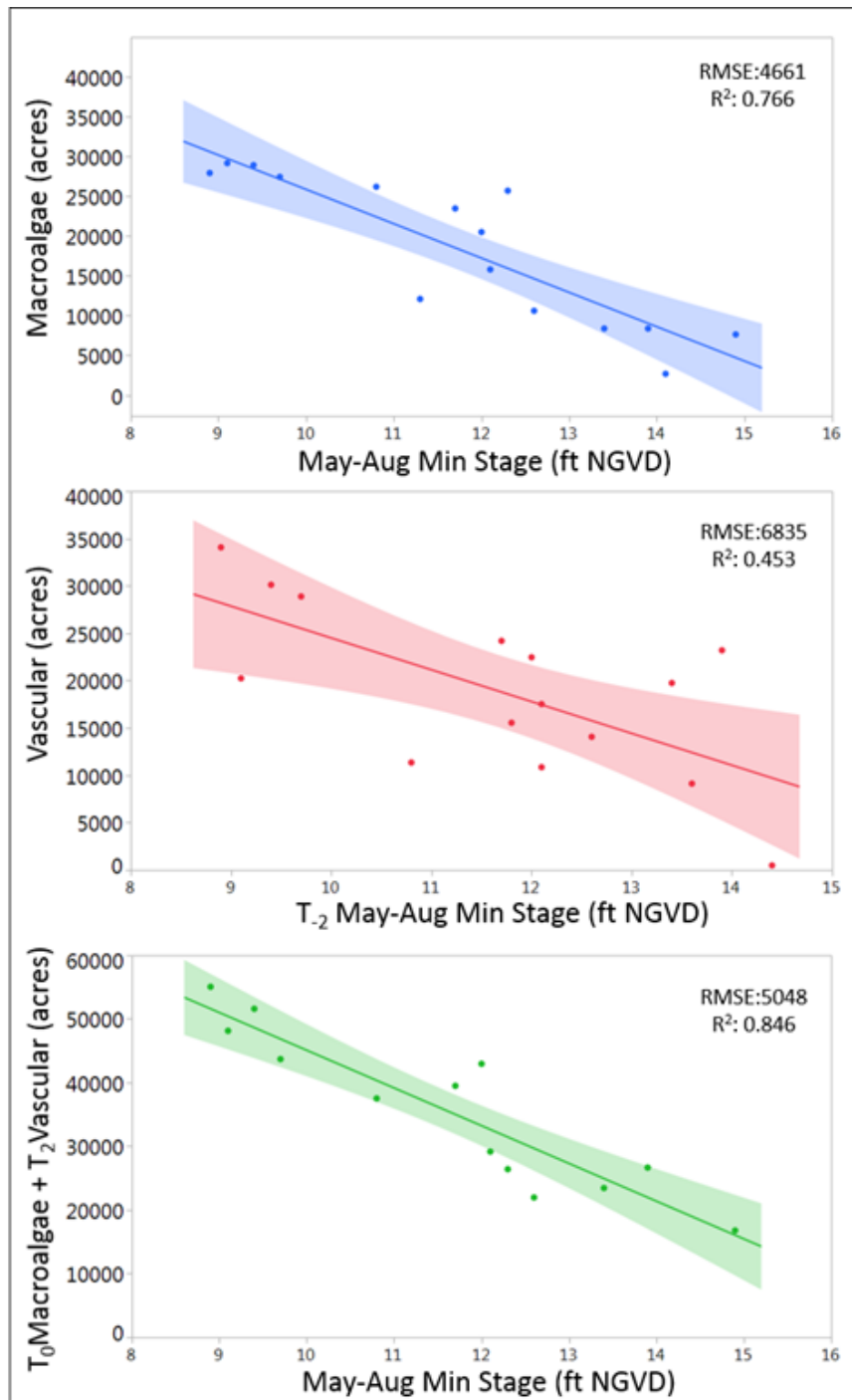




Submerged Vegetation



Source: Harwell and Sharfstein 2009

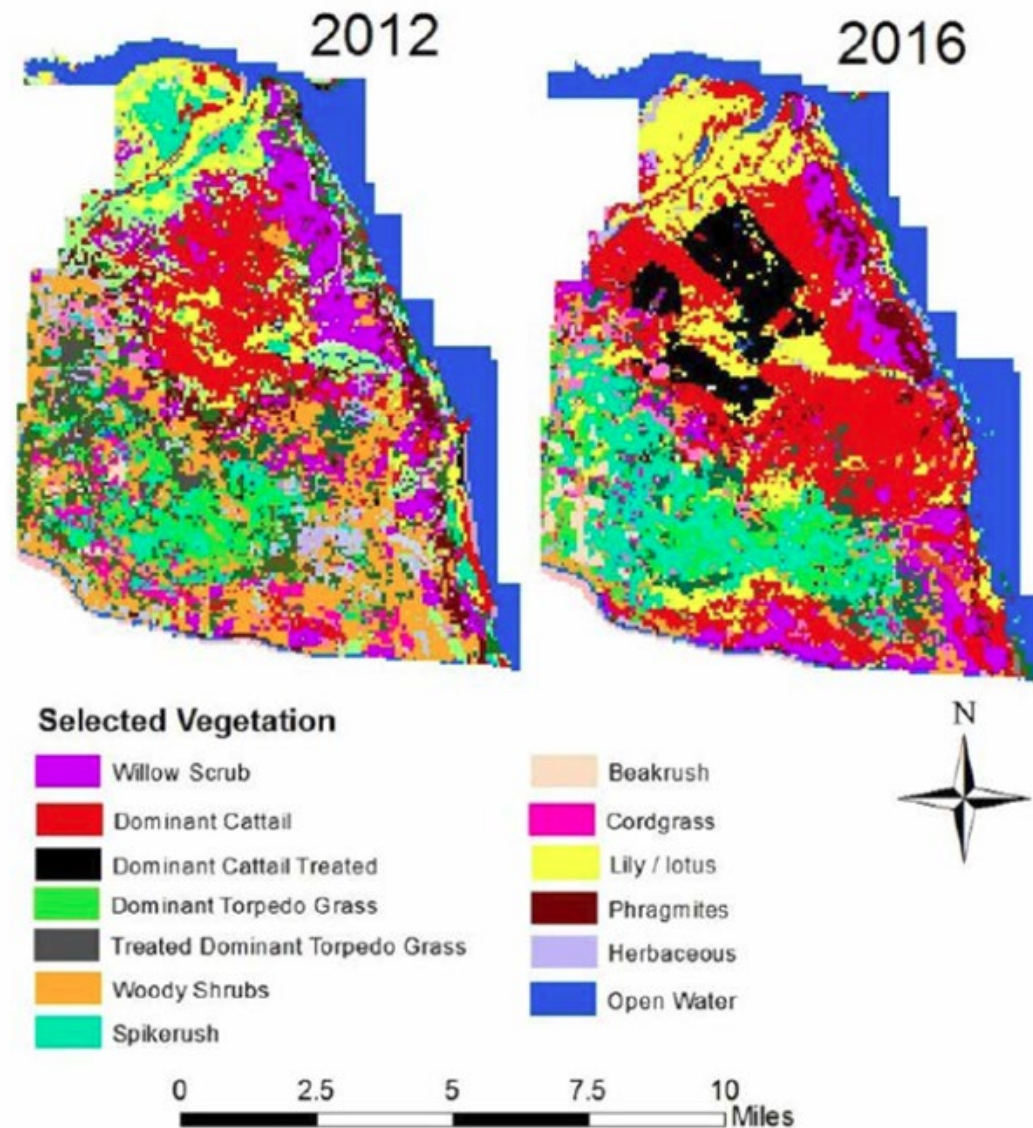


Source: Z. Welch, SFWMD

Littoral Vegetation



Source: Havens et al. 2003



Source: SFWMD

Wading Birds and Kites



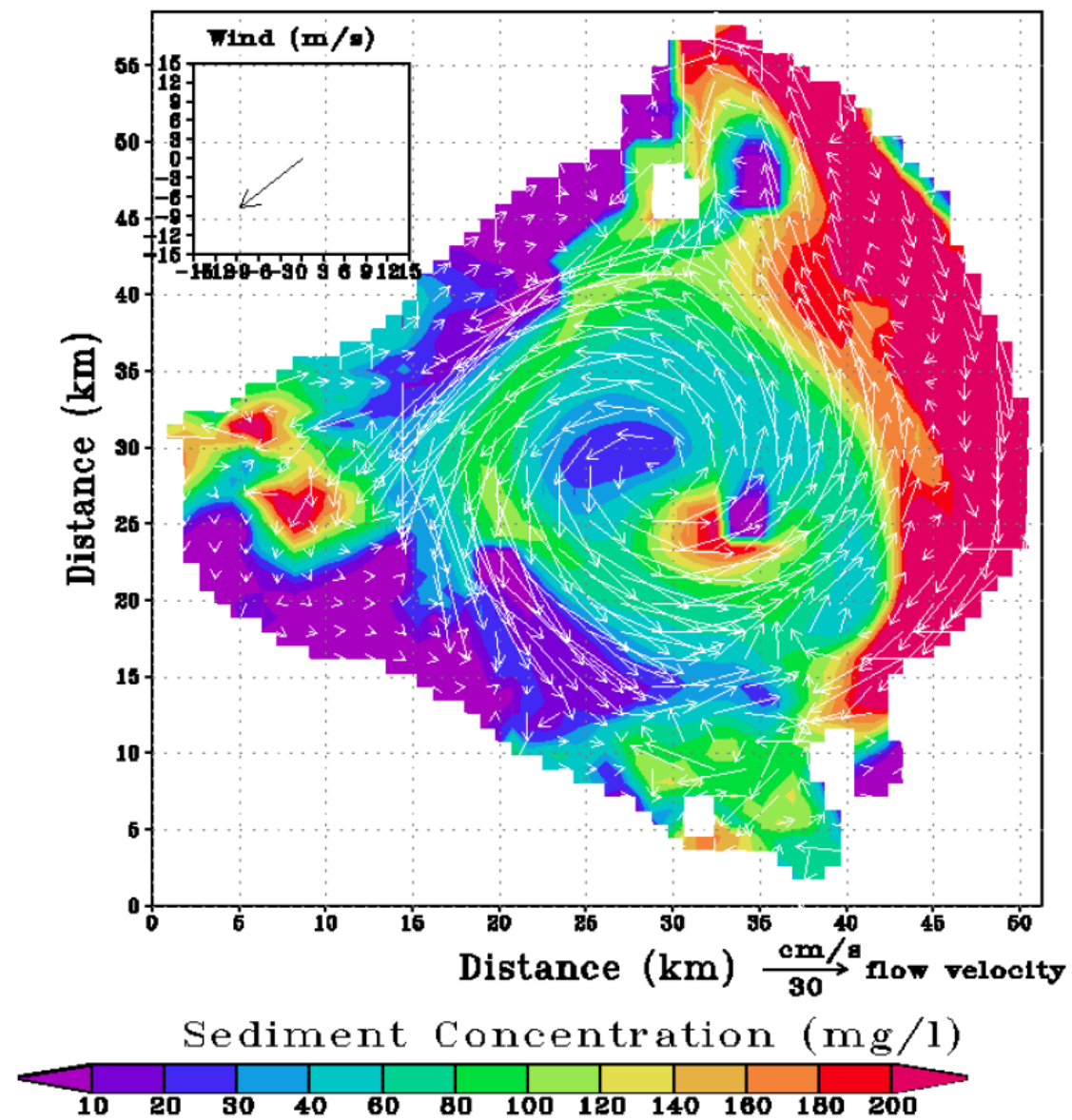
Source: National Audubon Society

Antecedent Conditions and Resilience



Source: Havens et al. 2003

Modeling and Monitoring



Source: Havens et al. 2003



Thank you